


COMPASS Update

Powerplan Enhancements on July 13

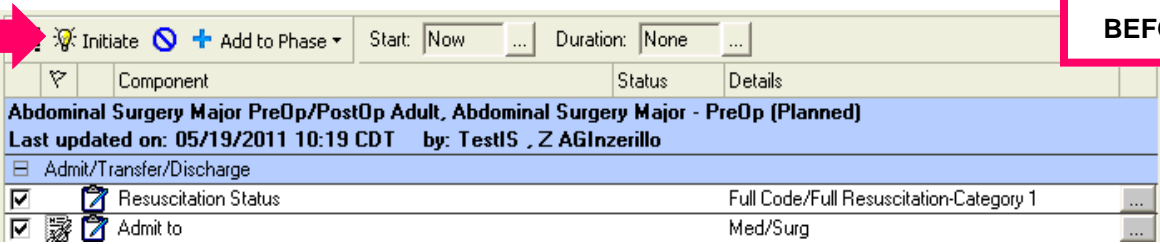
<u>Contents</u>	<u>Page #</u>
Initiate Button Relocated	1
Auto-Check When Selecting the Ellipses.....	2
Sub-Phase Hyperlink	2
Sub-Phase Opens when Selected	3


Initiate Button Relocated

To better mirror workflow, the Initiate button will be moved to the lower-right corner of the screen so that it is closer to the Sign or Orders for Signature button.

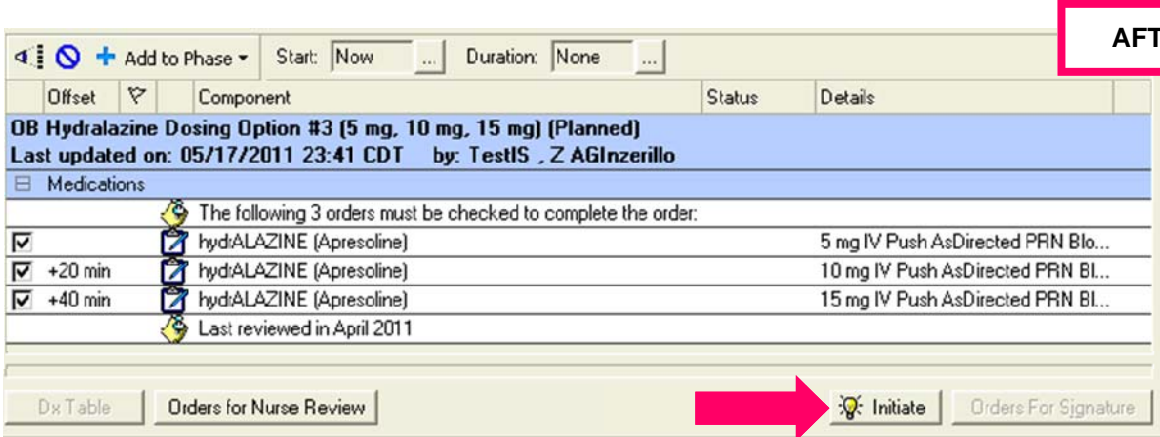


BEFORE





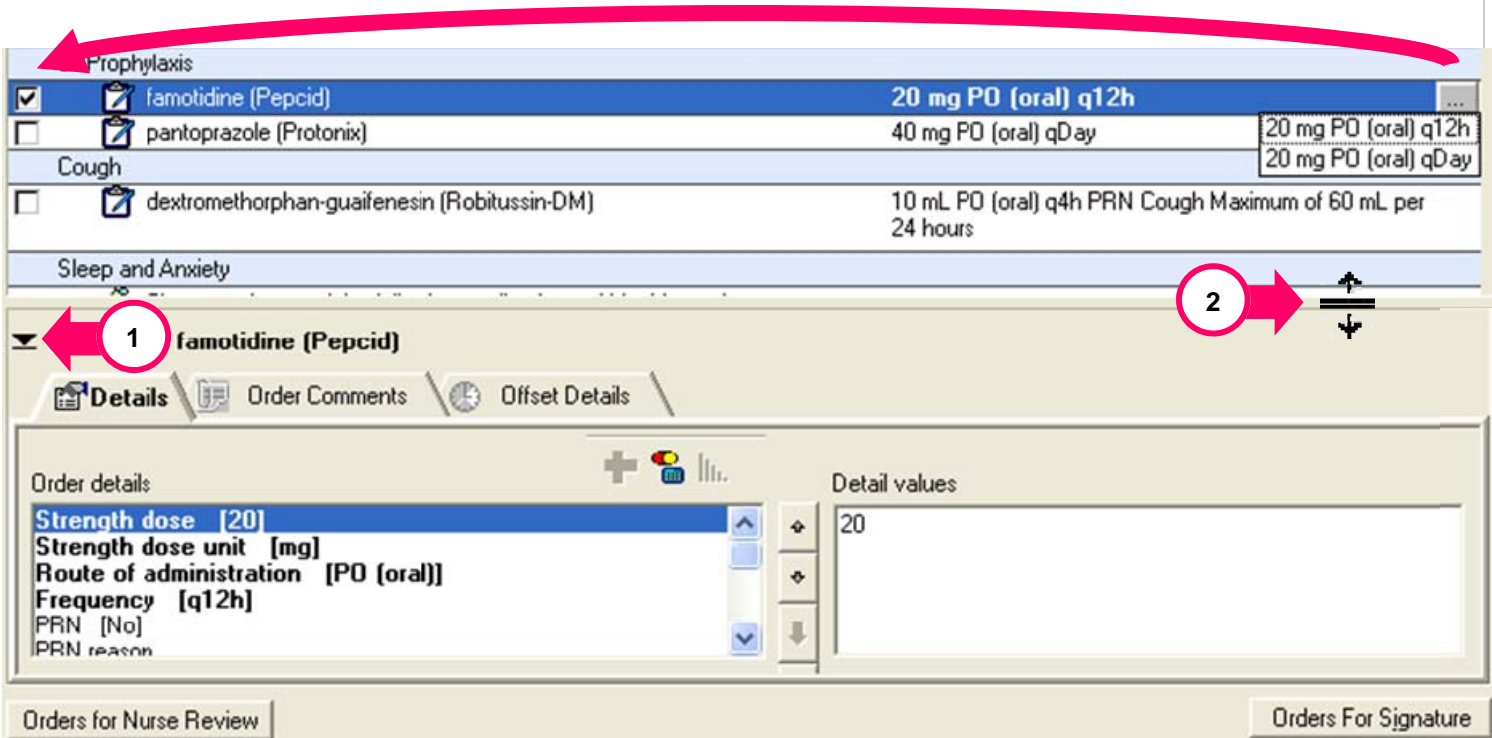
AFTER



Auto-Check When Selecting the Ellipses

When you click the ellipses in an order sentence, the box in front of the order sentence will automatically be checked and the order entry window will open. Example: When you select “2 tabs PO oral Once”, it will automatically place a check in the box to be include in the powerplan and open the order detail for this order.

When this happens, the Orders Details will open in lower half of your screen. You may reduce the size/appearance of the order details section by clicking on the down arrow (1) or hovering the mouse over the frame divider until the re-size cursor (2) appears, holding down the left mouse button and dragging the cursor downward. The Order Details section will re-size to your desired height.



Sub-Phase Hyperlink

Currently, you must click the sub-phase in the Navigation Pane to view orders included in the sub-phase. To simplify this process, a hyperlink is being added to each sub-phase in orders portion of the screen. The hyperlink appears on when the sub-phase is selected. Clicking the hyperlink will open the sub-phase so that its orders are viewable.



Sub-Phase Opens when Selected

Currently when selecting a sub-phase, the chart doesn't automatically open the phase so you may select orders.



After the improvements are installed, checking the box next to a phase in the Navigation Pane (1) will open the order within that phase (2). Clicking the Return to Admission button will return you to place where you left off.

