



Seton Reorganizes to Success in new Health Care Arena

*A message from Charles J. Barnett, FACHE
President/CEO, Seton Healthcare Family*

Regardless of legislative and legal alterations the health care landscape, it is time for fundamental change in how we deliver health care in this country. The nation's current system is inefficient and costly for individuals and our nation as a whole.

This need for change extends to the Seton Family as well.

Last August, the Seton Board of Trustees adopted an exciting five-year strategic framework. We will measure our success by how well we deliver person-centric, integrated health care that reduces overall cost while also achieving nationally recognized standards of safety and quality. We will be recognized as Central Texas's pre-eminent advocate for a socially just system of care that attends to the needs of the poor and the vulnerable. And we will also be a national leader in educating the next generation of physicians, nurses and other clinicians.

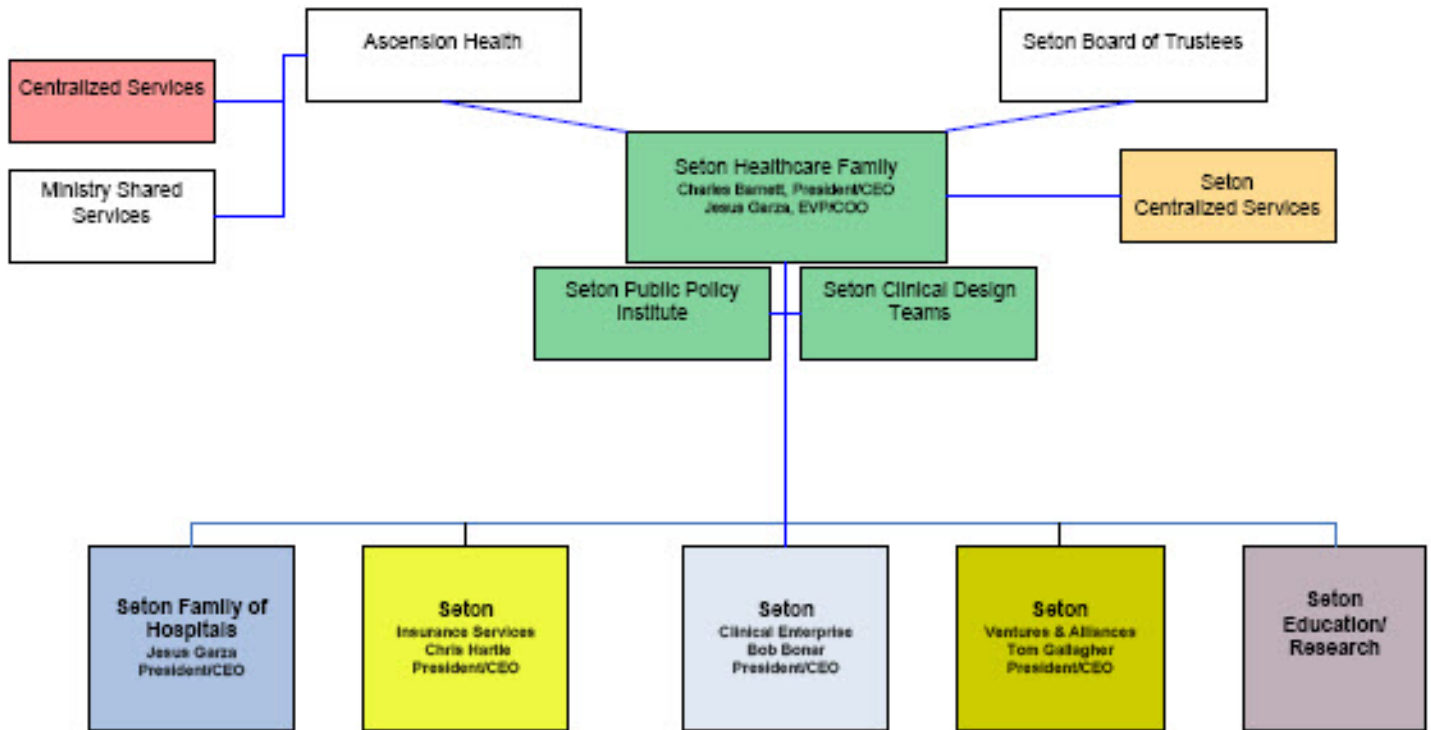
These lofty changes will not happen overnight. However, over the course of our almost 400-year Vincentian tradition, the Daughters of Charity have experienced the positive rewards of forward thinking.

A new structure is the first step in a series of changes that will enable Seton to effectively serve our community.

Seton Healthcare Family Will Focus on Future of Health Care

As part of our evolution in promoting a true "system" of care, our ministry will now be known as the **Seton Healthcare Family (SHF)**. I will continue to serve as president and chief executive officer. **Jesus Garza** will serve as executive vice president and chief operating officer. My expectation is that Jesus and I will serve as a leadership "pair," sharing responsibilities and accountability for the development of this new organization.

Seton Healthcare Family



SHF will house two new entities.

Clinical Design Teams – Led and staffed by clinicians, CDT will serve as an internal “innovation engine” focused on improving health care outcomes and reducing the overall cost of care. It will envision, design and test improvements in the delivery of care and services. Included will be the consulting talents of **Dr. Norman Chenven**, CEO and founder of Austin Regional Clinic; **Dr. Denis Cortese**, former CEO of the Mayo Clinic; **Dr. Donald Furman**, founding chief medical officer of CareMore; and other nationally recognized industry innovators. Seton leaders **Dr. Joyce Batcheller** and **Dr. Samson Jesudass** will head this work.

Seton Public Policy Institute – To create a just and accessible system of health care and services in Central Texas, we are establishing the Seton Public Policy Institute to improve our advocacy for enlightened and sustainable federal, state and local public policies. This institute will advocate for regulatory and legislative changes that support access to care and services for the poor and vulnerable. More details will follow.

New Operating Divisions

To offer the full continuum of care and services to our patients, there will be five operating divisions within SHF:

Jesus Garza will serve as SHF president. This operating division will continue to be the leader in providing inpatient care to the most critically ill persons in the region. Hospitals will always be a fundamental part of who we are and will continue to provide the safest, most effective and most efficient clinical care for our sickest patients. Executive oversight for some of the hospitals within SFH is changing.

John Brindley will oversee the **South Group** – Seton Medical Center Hays, Seton Southwest, Seton Edgar B. Davis and Seton Smithville Regional Hospital¹.

Greg Hartman will oversee the **Central Group** – Seton Medical Center Austin and University Medical Center Brackenridge.

Mark Hazelwood will continue to oversee the **North Group** – Seton Medical Center Williamson, Seton Northwest and Seton Highland Lakes.

Diana Resnik will again have responsibility for **Seton Shoal Creek**.

Bob Bonar will continue to serve as president of **Dell Children's Medical Center**.

Bob Bonar also will serve as president of the **Clinical Enterprise**, a new division responsible for expanding the scope of services Seton provides to individuals in outpatient settings and in their homes. This fundamental redesign of the outpatient health care delivery system is a key component of the change we will embrace as a part of our strategy to reduce the overall cost of care.

Samson Jesudass continues to serve as president of the **Seton Physician Enterprise**, a community of physicians including the non-profit health organizations that employ about 500 physicians and for which Seton is the sole owner, and what will be another 2,500 physicians aligned with Seton's mission and values.

Tom Gallagher will serve as president of **Seton Ventures and Alliances**, developing components in the continuum of care and services that are not wholly owned by Seton such as joint ventures, affiliations and alliances with physicians and allied organizations like nursing homes, home care agencies and hospice services. This division will negotiate, oversee and manage all major contracts for hospital-based clinical services provided by private groups of physicians.

In addition, the **Management Services Organizations (MSOs)** that support the **Seton Physician Enterprise** will report to Tom Gallagher through this division.

Chris Hartle will serve as president for **Seton Insurance Services**. This new operating division will organize access to, payment for and the promotion of healthier choices. It will create and effectively manage accountable care organizations, a type of payment and delivery reform model that ties provider reimbursements to quality metrics and reductions in the total cost of care for an assigned population of patients.

Seton Education and Research

Seton is committed to becoming a national leader in education and research as a means to recruiting and retaining the best clinical and administrative talent and expanding access to specialty services. **Jim Lindsey**, MD, will serve as the SHF chief medical officer for Medical Education and Medical Research and will continue as primary liaison with The University of Texas Southwestern Medical Center (UTSW). **Joyce Batcheller**, DNP, will serve as the dean for the **Seton Academy for Research and Education** in Nursing and Clinical Professions. In addition, two soon-to-be named professionals will work with Jim and Joyce – a UTSW regional dean for Austin and an executive director of the Seton/UTSW Clinical Research Institute.

These changes are effective June 1, 2011.

If you would like more information or have any questions, please feel free to contact me, Jesus, Dr. Lindsey or any of the ministry presidents:

Charles J. Barnett, FACHE, (512) 324-1902

Jesus Garza, (512) 324-1981

Jim Lindsey, MD, (512) 324-2906

Bob Bonar, D.H.A., president/Clinical Enterprise & Dell Children's, (512) 324-0106

John Brindley, FACHE, president/South Group, (512) 324-1868

Tom Gallagher, president/Seton Ventures & Alliances, (512) 324-1903

Chris Hartle, president/Seton Insurance Services, (512) 324-3525

Greg Hartman, president/Central Group, (512) 324-5833

Mark Hazelwood, president/North Group, (512) 324-4055

Samson Jesudass, president/Physician Enterprise, (512) 324-5656

Diana Resnik, senior vice president/Seton Shoal Creek Hospital, (512) 324-7031

ⁱ Smithville Regional Hospital is scheduled to become part of the Seton Healthcare Family June 1, 2011.