

# COMPASS Update

## Physician Tips & Tricks

### COMPASS Improvements Made Sept. 20 - Oct 18

#### For Medical Practitioners Regardless of Specialty

Hypercoagulability Careset .....	2
Enteral Tube Feeding Protocol .....	3-7
Blood Products Hold for Surgery .....	8-9
Hospitalist Patient Education orders .....	9
Zosyn 4,500mg IVP q6h med order .....	10
XR Spine Thoracic 1 View AP order .....	10
Pediatric Diet orders.....	10
Trauma Cases Pediatric Admit to Med/Surg or PICU order.....	11
Limb Circumference Documentation Changes .....	11
Airway Documentation Caredex Views Changes.....	12

#### For Allied Health Personnel

New Orders View Summary tab .....	13
-----------------------------------	----

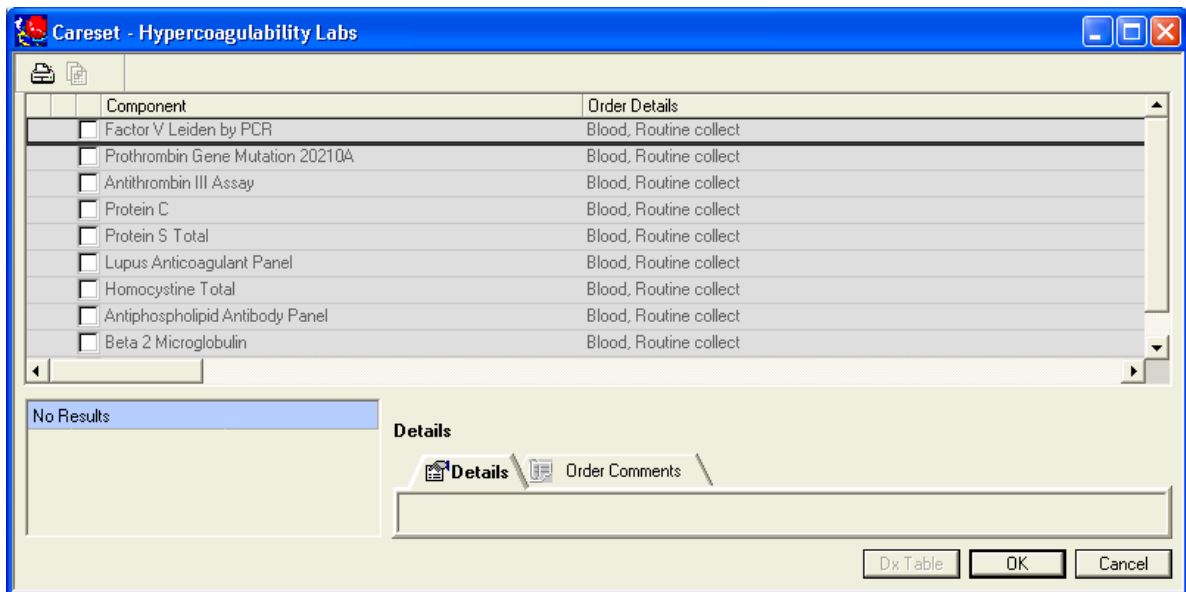
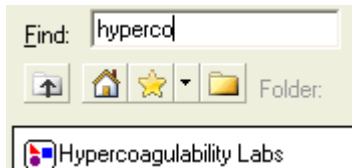
## Hypercoagulability Careset Changes on October 6

### Rationale

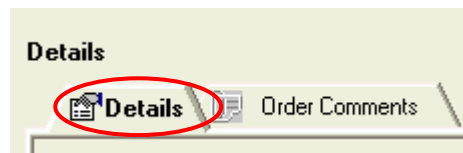
- Hypercoagulability Labs Careset was added at request of physicians, so they may more easily order labs to assist in diagnosing type or presence of coagulopathy.

### Summary of Addition

- Search by entering “hypercoagulability”



- All lab orders default to **Routine** collect
- Steps:
  - Select appropriate lab orders for the patient. Note: none are pre-checked.
  - **Modify** order entry details as needed for all labs selected



- Select **OK**
- Review orders
- Select **Sign**

## Enteral Tube Feeding Protocol Changes Made on Sept. 28

### Rationale

- To respond to clinician request for a simplified e-order entry process
- To align with the network pre-printed order set of the Adult Enteral Nutrition Protocol
- To default most common tube types
- To reduce duplicate order alerts
- To clarify the delegation of the diet order management process through the Dietician.

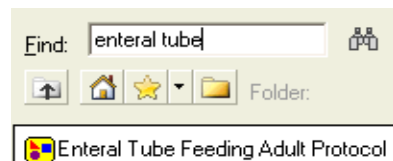
### Key Points

- Pay attention to defaults, particularly *tube type* and *formula type*, before signing orders
- Nursing will not be changing/modifying formula rate on the order – To see the current formula rate the user will have to look in **I-View** under **I&O's**.
- **Peptamen Prebio** formula is for SEBD use only.
- The **Consult Dietician Adults Assessment** will task the Dietician to follow-up with the patient for the final tube feeding regimen. The Dietician will be responsible for adjusting formula type and rate.
- The **Consult Radiology** order does not electronically notify the consulting physician. User is still required to make physician-physician contact.

### Summary of Changes

1. Name change to **Enteral Tube Feeding Protocol** to align with Seton's *Order Set Style Guide*.

#### Before



#### After



2. Formula Types and Tube Types

- Continuous **Standard Formula** and Continuous **Standard Critical Care Formula** default to **Nasoduodenal/Jejunal tube** since greater than 80% of patients on enteral nutrition have NJ tubes.

Tube Feedings		
	*** Continuous ***	
	Standard Formula:	
<input type="checkbox"/>	<input checked="" type="checkbox"/> Tube Feeding Adult	Fibersource HN (standard with fiber), Start rate: 20 mL per Nasoduodenal/jejunal tube, Goal Rate: __ mL/hr...
<input type="checkbox"/>	<input checked="" type="checkbox"/> Tube Feeding Adult	Isosource-HN (standard without fiber), Start rate: 20 mL per Nasoduodenal/jejunal tube, Goal Rate: __ mL/hr...
	Standard Critical Care Formula	
<input type="checkbox"/>	<input checked="" type="checkbox"/> Tube Feeding Adult	Impact Peptide 1.5 (immune modulating), Start rate: 20 mL per Nasoduodenal/jejunal tube, Goal Rate: __ mL...

## Enteral Tube Feeding Protocol Changes Made on Sept. 28

- Select the order with the appropriate formula type
- Use the **ellipse** option to change to a **Nasogastric** or a **Gastric** tube type if **Nasoduodenal/Jejunal** is not the current tube type.
- To enter a rate, **modify** within the **Special Instructions** detail and free text the appropriate rate.

Example:

<input type="checkbox"/>	<input checked="" type="checkbox"/> Tube Feeding Adult	Fibersource HN (standard with fiber), Start rate: 20 mL per Nasoduodenal/jejunal tube, Goal Rate: __ mL/hr, Advance formula...	...
<input type="checkbox"/>	<input checked="" type="checkbox"/> Tube Feeding Adult	Fibersource HN (standard with fiber), Start rate: 20 mL per Nasogastric tube, Goal Rate: __ mL/hr, Advance formula...	...
<input type="checkbox"/>	<input checked="" type="checkbox"/> Tube Feeding Adult	Fibersource HN (standard with fiber), Start rate: 20 mL per Gastric tube, Goal Rate: __ mL/hr, Advance formula...	...

### 3. Specialty Formulas

- If selecting a **Specialty Formula**, select the order with the appropriate tube type:
  - **Nasoduodenal/Jejunal**
  - **Nasogastric**
  - **Gastric**

<input type="checkbox"/>	<input checked="" type="checkbox"/> Tube Feeding Adult	Diabetisource AC (diabetic), Start rate: 20 mL per Nasoduodenal/jejunal tube, Goal Rate: __ mL/hr, Advance formula...	...
<input type="checkbox"/>	<input checked="" type="checkbox"/> Tube Feeding Adult	Diabetisource AC (diabetic), Start rate: 20 mL per Nasogastric tube, Goal Rate: __ mL/hr, Advance formula...	...
<input type="checkbox"/>	<input checked="" type="checkbox"/> Tube Feeding Adult	Diabetisource AC (diabetic), Start rate: 20 mL per Gastric tube, Goal Rate: __ mL/hr, Advance formula...	...

- Select the order with the appropriate tube type
- Use the **ellipse** option or **modify** the order to select the appropriate formula type.
- To enter a rate, **modify** within the **Special Instructions** detail and free text the appropriate rate.

Example:

<input type="checkbox"/>	<input checked="" type="checkbox"/> Tube Feeding Adult	Diabetisource AC (diabetic), Start rate: 20 mL per Nasoduodenal/jejunal tube, Goal Rate: __ mL/hr, Advance formula...	...
<input type="checkbox"/>	<input checked="" type="checkbox"/> Tube Feeding Adult	Novosource Renal (renal), Start rate: 20 mL per Nasoduodenal/jejunal tube, Goal Rate: __ mL/hr, Advance formula...	...
<input type="checkbox"/>	<input checked="" type="checkbox"/> Tube Feeding Adult	Nutren 2.0 (concentrated), Start rate: 20 mL per Nasoduodenal/jejunal tube, Goal Rate: __ mL/hr, Advance formula...	...
<input type="checkbox"/>	<input checked="" type="checkbox"/> Tube Feeding Adult	Peptamen 1.5 (peptide based), Start rate: 20 mL per Nasoduodenal/jejunal tube, Goal Rate: __ mL/hr, Advance formula...	...
<input type="checkbox"/>	<input checked="" type="checkbox"/> Tube Feeding Adult	Peptamen Bariatric, Start rate: 20 mL per Nasoduodenal/jejunal tube, Goal Rate: __ mL/hr, Advance formula...	...
<input type="checkbox"/>	<input checked="" type="checkbox"/> Tube Feeding Adult	Peptamen PREBIO (SEBD ONLY), Start rate: 20 mL per Nasoduodenal/jejunal tube, Goal Rate: __ mL/hr, Advance formula...	...
<input type="checkbox"/>	<input checked="" type="checkbox"/> Tube Feeding Adult	Vivonex RTF, Start rate: 20 mL per Nasoduodenal/jejunal tube, Goal Rate: __ mL/hr, Advance formula...	...
<input type="checkbox"/>	<input checked="" type="checkbox"/> Tube Feeding Adult	Peptamen AF (Sepsis/ARDS/ALI), Start rate: 20 mL per Nasoduodenal/jejunal tube, Goal Rate: __ mL/hr, Advance formula...	...

### 4. Intermittent and Other Regimen

- **Standard, Standard Critical Care and Specialty formulas default to Nasogastric tube q4h.**

## Enteral Tube Feeding Protocol Changes Made on Sept. 28

<input type="checkbox"/>		Standard Formula	
<input type="checkbox"/>		Tube Feeding Adult	Fibersource HN (standard with fiber), per Nasogastric tube q4h
<input type="checkbox"/>		Tube Feeding Adult	IsoSOURCE-HN (standard without fiber), per Nasogastric tube q4h
<input type="checkbox"/>		Standard Critical Care Formula	
<input type="checkbox"/>		Tube Feeding Adult	Impact Peptide 1.5 (immune modulating), per Nasogastric tube q4h
<input type="checkbox"/>		Specialty Formula	
<input type="checkbox"/>		Tube Feeding Adult	Diabetsource AC (diabetic), per Nasogastric tube q4h
<input type="checkbox"/>		Tube Feeding Adult	Novosource Renal (renal), per Nasogastric tube q4h
<input type="checkbox"/>		Tube Feeding Adult	Nutren 2.0 (concentrated), per Nasogastric tube q4h
<input type="checkbox"/>		Tube Feeding Adult	Peptamen 1.5 (peptide based), per Nasogastric tube q4h
<input type="checkbox"/>		Tube Feeding Adult	Peptamen AF (Sepsis/ARDS/ALI), per Nasogastric tube q4h
<input type="checkbox"/>		Tube Feeding Adult	Peptamen Bariatric, per Nasogastric tube q4h
<input type="checkbox"/>		Tube Feeding Adult	Peptamen PREBIO (SEBD ONLY), per Nasogastric tube q4h
<input type="checkbox"/>		Tube Feeding Adult	Vivonex RTF, per Nasogastric tube q4h

- o Select the appropriate formula type
- o Use the **ellipse** option or **modify** the order to select the appropriate tube type and frequency if **Nasogastric tube q4h** is not appropriate for the patient.

Example:

<input type="checkbox"/>		Tube Feeding Adult	Fibersource HN (standard with fiber), per Nasogastric tube q4h	
<input type="checkbox"/>		Tube Feeding Adult	Fibersource HN (standard with fiber), per Nasogastric tube q4h	
<input type="checkbox"/>		Standard Critical Care Formula	Fibersource HN (standard with fiber), per Nasogastric tube qid	
<input type="checkbox"/>		Tube Feeding Adult	Fibersource HN (standard with fiber), per Nasogastric tube tid	
<input type="checkbox"/>		Specialty Formula	Fibersource HN (standard with fiber), per Nasogastric tube 5xDay	
<input type="checkbox"/>		Tube Feeding Adult	Fibersource HN (standard with fiber), per Nasogastric tube qid, Dietitian to determine and order final amount	
<input type="checkbox"/>		Tube Feeding Adult	Fibersource HN (standard with fiber), per Gastric tube q4h	
<input type="checkbox"/>		Tube Feeding Adult	Fibersource HN (standard with fiber), per Gastric tube qid	
<input type="checkbox"/>		Tube Feeding Adult	Fibersource HN (standard with fiber), per Gastric tube tid	
<input type="checkbox"/>		Tube Feeding Adult	Fibersource HN (standard with fiber), per Gastric tube 5xDay	
<input type="checkbox"/>		Tube Feeding Adult	Fibersource HN (standard with fiber), per Gastric tube qid, Dietitian to determine and order final amount/fre	
<input type="checkbox"/>		Tube Feeding Adult		

### 5. All **Additives** are defaulted to **1 packet tid**.

Additives			
<input type="checkbox"/>		Additives	Protein Powder, 1 packet tid
<input type="checkbox"/>		Additives	Glutamine, 1 packet tid
<input type="checkbox"/>		Additives	Fiber, 1 packet tid

- o Select the appropriate **additive**
- o Use the **ellipse** option or **modify** the order to select the appropriate amount of packets and/or frequency.

### 6. Default of Enteral Tube Intervention to **Insert, Nasoduodenal/jejunal tube**.

- o **Intervention** orders give instructions on what to do now.

<input checked="" type="checkbox"/>		Enteral Tube Intervention	Insert, Nasoduodenal/jejunal tube, via Seton Two-step Method policy (includes CXR and KUB). May use O...	
<input checked="" type="checkbox"/>		Enteral Tube Management	Insert, Nasoduodenal/jejunal tube, via Seton Two-step Method policy (includes CXR and KUB). May use O...	
<input checked="" type="checkbox"/>		Treatment Instructions	Insert, Nasogastric tube, Secure Feeding Tube with Bridle device if available	

- o Use the **ellipse** option to select **Nasogastric tube** instructions if **Nasoduodenal/Jejunal tube** is not appropriate for the patient.
- o If neither option is appropriate for the patient, the user will **uncheck** the order.

NOTE: Seton policy requires **Nasoduodenal/Jejunal** tubes be inserted via the Two-step Method. Therefore, nursing will place radiology orders for a CXR and KUB upon completion of insertion.

## Enteral Tube Feeding Protocol Changes Made on Sept. 28

### 7. Default of Enteral Tube Management to **Nasoduodenal/jejunal tube, To Feed.**

- o **Management** orders give instructions on what to do later.

<input checked="" type="checkbox"/>		Enteral Tube Management	Nasoduodenal/jejunal tube, To Feeds	
<input checked="" type="checkbox"/>		Treatment Instructions	Continuous Order, If feeding tube is in placement, please reinsert per original	
<input type="checkbox"/>		Treatment Instructions	Continuous Order, Implement dietitian	

- o Use the **ellipse** option to select either **Nasogastric** or **Gastric** tubes if **Nasoduodenal/Jejunal** tube is not appropriate for the patient.

### 8. Per protocol, the following 3 orders must be selected for declogging a feeding tube: (DO NOT uncheck these orders!)

- o **Treatment Instructions - Continuous Order, Declog feeding tube by:**
- o **Sodium bicarbonate**
- o **Pancrelipase (Creon 12000)**

<input checked="" type="checkbox"/>		Treatment Instructions	Continuous Order, Declog feeding tube by:
-------------------------------------	--	------------------------	---

#### Treatment Instructions

##### Order Comment:

(1) flush with warm water - no cola or juice. (2) if unsuccessful, instill total volume of prepared pancreatic enzyme solution into feeding tube under light pressure, using light "back and forth" motion with the plunger to help dislodge the clog. (3) Clamp the tube for 5 -15 minutes, then attempt to aspirate or flush with warm sterile water.

Medications				
Use medications in liquid form when possible (high sorbitol content may cause diarrhea).				
The following 2 orders must be checked to complete the order:				
<input checked="" type="checkbox"/>		sodium bicarbonate	650 mg NG Tube AsDirected PRN Other (see order comment) To declog feeding tube: Crush 1 sodium bicarbonate tablet (650 mg) and mix with 5 - 10 mL sterile water; thoroughly dissolve for approx. 3 - 5 mi...	
<input checked="" type="checkbox"/>		pancrelipase (Creon 12000)	1 capsules NG Tube AsDirected PRN Other (see order comment) To declog feeding tube: Open capsule and pour into the water/bicarbonate mixture and let dissolve for at least 5 minutes.	

### 9. A **Treatment Instruction** order has been added for a PRN KUB order for post-pyloric residuals greater than or equal to 30ml. Nursing will place the KUB order if post-pyloric residuals meet the requirements.

<input type="checkbox"/>		Treatment Instructions	Continuous Order, KUB to check for Enteral Tube placement PRN if post-pyloric residual is greater than or equal to 30 mL.
--------------------------	--	------------------------	---

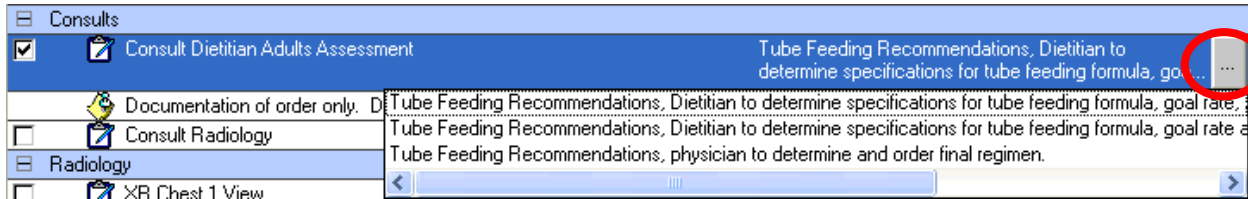
### 10. Default to **Water Bolus – 30ml, q8h.**

Feeding Tube Care				
<input checked="" type="checkbox"/>		Water Bolus	30 ml, q8h	
<input type="checkbox"/>		Water Bolus	30 ml, AsDirected, PRN other (see order comment)	
<input type="checkbox"/>		Water Bolus	q4h	

- o Select the appropriate **Water Bolus** details AND/OR uncheck the default.

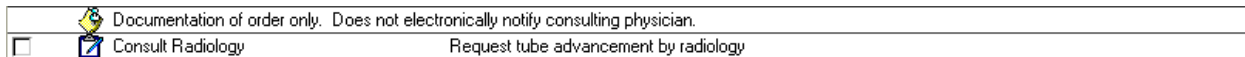
## Enteral Tube Feeding Protocol Changes Made on Sept. 28

### 11. Default to Consult Dietician Adults Assessment.

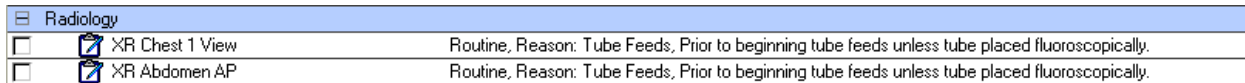


- o There are 3 choices available in the **ellipse** option for regimen ordering and management:
  - i. Ellipse Option 1: Provider requests Dietician to order initial regimen (formula type, goal rate, and additives), but provider will adjust and manage tube feeding rate(s).
  - ii. Ellipse Option 2: Provider requests Dietician to determine and order initial regimen (formula type, goal rate, and additives) AND continue to adjust and manage tube feeding rate(s).
  - iii. Ellipse Option 3: Provider determines initial regimen and adjusts and manages tube feeding rate(s) – no Dietician involvement.

### 12. Order available to Consult Radiology



### 13. Radiology orders have been added



NOTE: A radiology order for CXR or Abdomen AP (KUB) will not need to be ordered by the medical provider if an **Insert, Nasoduodenal/jejunal** order is placed using the Seton Two-step Method. Both radiology orders will be placed by the nurse after insertion of the NJ tube.

### Multidisciplinary View

The Dietician's progress notes can be seen under the **Multidisciplinary View** in the Menu tab under Nutrition Goals.

ST Goals		
Nutrition Goals		
Goal	Detail	Date
<b>Enteral Tube Feeding Goal</b>	Peptamen Bariatric at 75 ml/hr = 1800 kcal, 168 gm pro, 1512 ml free H2O.	08/29/11 12:59
<b>Clinical Nutrition Plan of Care</b>	1) Continue Mech Soft diet. Will add straw Boost Plus TID 2) If pt unable to tolerate diet and meet at least 60% est needs PO within 24hrs, rec start nocturnal feeds. Rec Fibersource HN goal rate of 100ml/hr x 12hrs (1900-0700) to meet 65% est kcals, ~60% est pro needs	09/12/11 13:15

## Blood Products Hold for Surgery Changes on Sept. 20

### Rationale

- Freetext field to input “Day of Surgery “ viewable in Single Order view but **not** viewable in Powerplan view

### Single Order View

Packed Red Blood Cells Order 08/29/2011 15:53 Blood, Start Date 08/29/2011 15:53 CDT, Routine, 2 Units, For Surgery (PRBC) CDT

**Details for Packed Red Blood Cells (PRBC)**

Details Order Comments

Order details

**Specimen Type [Blood]** Blood

**Collection Date and Time [08/29/2011 15:53 CDT]**

**Collection Priority [Routine]**

Collect Instructions

**Number of Unit(s) [2]**

Aliquot Volume

**Unit Status [For Surgery]**

Date of Surgery

Autologous Blood Prod

Directed Blood Prod

Irradiated Prod

### Powerplan View

Packed Red Blood Cells Blood, Start Date T;N, Routine Units, For Surgery

**Details for Packed Red Blood Cells**

Details Order Comments Offset Details

Order details

**Specimen Type [Blood]** Blood

Collection Date and Time [T;N]

**Collection Priority [Routine]**

Collect Instructions

**Number of Unit(s) [4]**

Aliquot Volume

**Unit Status [For Surgery]**

Autologous Blood Prod

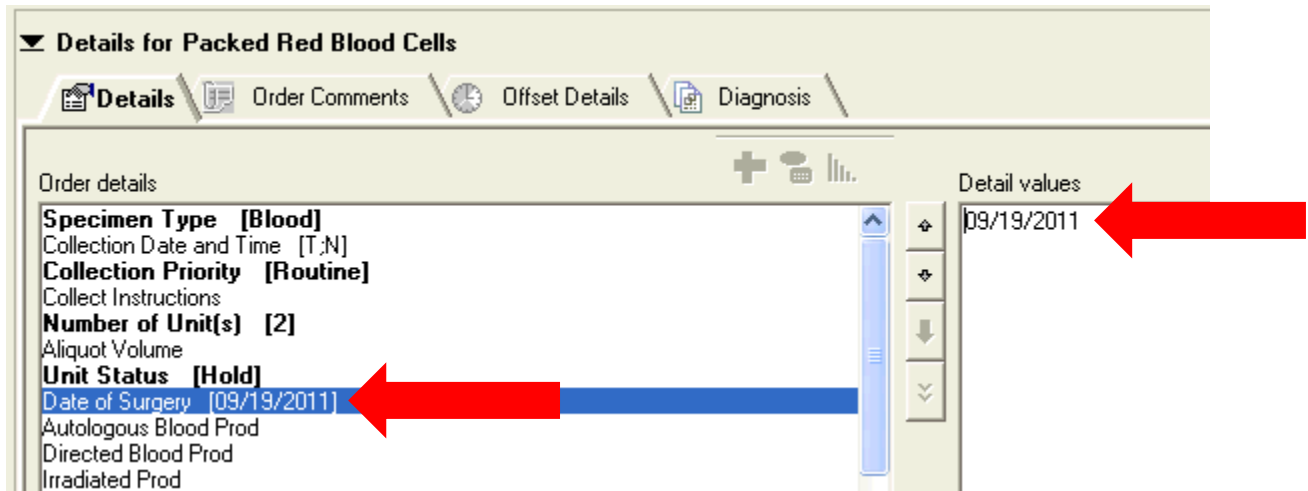
Directed Blood Prod

“Date of Surgery” is not viewable for user to input actual date of surgery when using a Powerplan

## **Blood Products Hold for Surgery Changes (cont.)**

### **Summary of Changes**

- The Date of Surgery will now display and can be modified within a PowerPlan



## **Hospitalist Patient Education Orders**

### **Rationale**

- To ensure patients receive appropriate education orders

### **Summary of Changes**

- A "Please print out the Hospitalists patient education sheet for \_\_\_ using attached link and give to the family on admission." communication order was added to the following order sets:
  - Asthma Admission to Med/Surg Pedi
  - Acute Gastroenteritis Admit to Med/Surg Pedi
  - Fever without a Source Admit to Med/Surg Pedi
  - UTI Admit Med/Surg Pedi
  - Hyperbilirubinemia Pedi/Neo
  - Laryngotracheitis (Croup) Admit to Pedi Med/Surg
  - Bronchiolitis Admit Med/Surg Pedi

## Zosyn 4,500mg IVP q6h med order

### Rationale

- The “(Severe infections including Pseudomonas)” order sentence was removed because it was not appropriate.

#### BEFORE

	<b>piperacillin-tazobactam</b> (Zosyn)	Order	09/12/2011 15:55 CDT	4,500 mg IV Piggyback q6h (Severe infections including Pseudomonas)
--	---	-------	-------------------------	--

#### AFTER

	<b>piperacillin-tazobactam</b> (Zosyn)	Order	09/12/2011 15:53 CDT	4,500 mg IV Piggyback q6h
--	---	-------	-------------------------	---------------------------

## XR Spine Thoracic 1 View AP

### Rationale

- Added to COMPASS at the request of clinicians

## Pediatric Diet order

### Rationale

- To accommodate a missing therapeutic diet order detail

### Summary of Changes

- “Wired Jaw” is now an option within the Pedi Diet order

**Details for Pediatric Diet**

**Order details**

- Diet Type**
- Pedi Therapeutic
- Modified Liquid
- Advance As Tolerated
- Add Snacks
- Room Service Participation Level [Appropriate for Room Service]
- Tray for Breast Feeding Mom
- Special Instructions
- Requested Start Date and Time [09/09/2011 9:53 CDT]

**Detail values**

- Low Sodium
- Low Microbial
- Mechanical Soft
- Puree
- Renal
- Renal Dialysis
- Vegetarian
- Wired Jaw
- Bariatric 1
- Bariatric 2
- Bariatric 3

## Trauma Cases Pediatric Admit to Pedi Med/Surg or PICU order

### Rationale

- To include a clinician-requested order option

### Summary of Changes

- A "D5 1/2 NS + KCL 20 mEq/L" order was added.

Offset	Component	Status	Details
<input type="checkbox"/>	Sodium Chloride 0.9% (NS Bolus)		20 mL/kg IV Infusion Once
<b>Maintenance IV Fluids</b>			
<input type="checkbox"/>	D5 1/2 NS + KCL 20 mEq/L		IV Infusion mL/hr
<input type="checkbox"/>	D5 1/4 NS		IV Infusion mL/hr
<input type="checkbox"/>	D5 1/2 NS		IV Infusion mL/hr

## Limb Circumference Documentation Changes Made on Sept 29

### Rationale

- New limb circumference documentation allows charting for multiple sites, includes unit of measure, and helps clinicians better visualize trends.
- The Snake Bite Protocol requires frequent limb circumference assessments.

### Flowsheet Viewing of Circumferences

- From the Flowsheets, double click on a result to bring up the Result Detail window to see the full label.

Quick View | Lab | Rad | Vitals/Pain | **Assessment**

Flowsheet: Assessment View | Level: Assessment View

29 September 2011 10:00

Assessment View	09/30/2011 8:00 CDT	09/29/2011 12:00 CDT
<b>Musculoskeletal Assessment</b>		
Musculoskeletal Review of System	WDL except	
Compartment Syndrome Assessment		
Arm Compartment Syndrome Assmt-Left	Pain, deep, throbbing, unrelen	
Circumference(s) Arm-Left (Proximal closest to bit)		
Circumference	18	
Circumference(s) Arm-Left (Distal site 2 below bit)		
Circumference	19	
<b>Integumentary Assessment</b>		
Integumentary Review of System	WDL except	
Skin Color	Pale	
Arm Description-Left	Normal for eth	
Skin Temperature	Warm	
Skin Description	Normal for eth	

**Result Details - ZZTEST, DCPPEFEMALE**

Result History

Value	Valid From	Valid Until
6	09/16/2011 16:25 CDT	Current

Result | Action List

**Circumference Arm-Left :: (Finger, Distal Thumb Site 4) 6 cm**

Date/Time: 16 September 2011 10:00 CDT

Contributor System: PowerChart

Status: Auth (Verified)

Source: Clinician

## Airway Documentation Carex Views Changes on October 12

### Rationale

- Revisions to the Respiratory section have been made so that only the most current Artificial Airway documentation will display

### Summary of Change

- Documentation of Airway in I-View will flow to Carex with date and time
- Documentation of removal will continue to display until discharge or addition of new airway
- Tracheostomy Tube display on Carex:

Respiratory	
Airway Type:	Tracheostomy tube - 08/11/11 09:39
Tracheostomy Tube Description:	Fenestrated - 08/11/11 07:00
Airway / Nasal CPAP Prong Size:	9.5 - 08/11/11 07:00

- Endotracheal Tube Display

Respiratory	
Airway Type:	Nasal Endotracheal Tube - 08/11/11 04:00
ETT Description:	Cuffed - 08/11/11 04:00
Airway / Nasal CPAP Prong Size:	8 - 08/11/11 04:00

- Other airway type display:

Respiratory	
Airway Type:	Nasopharyngeal - 08/11/11 09:40

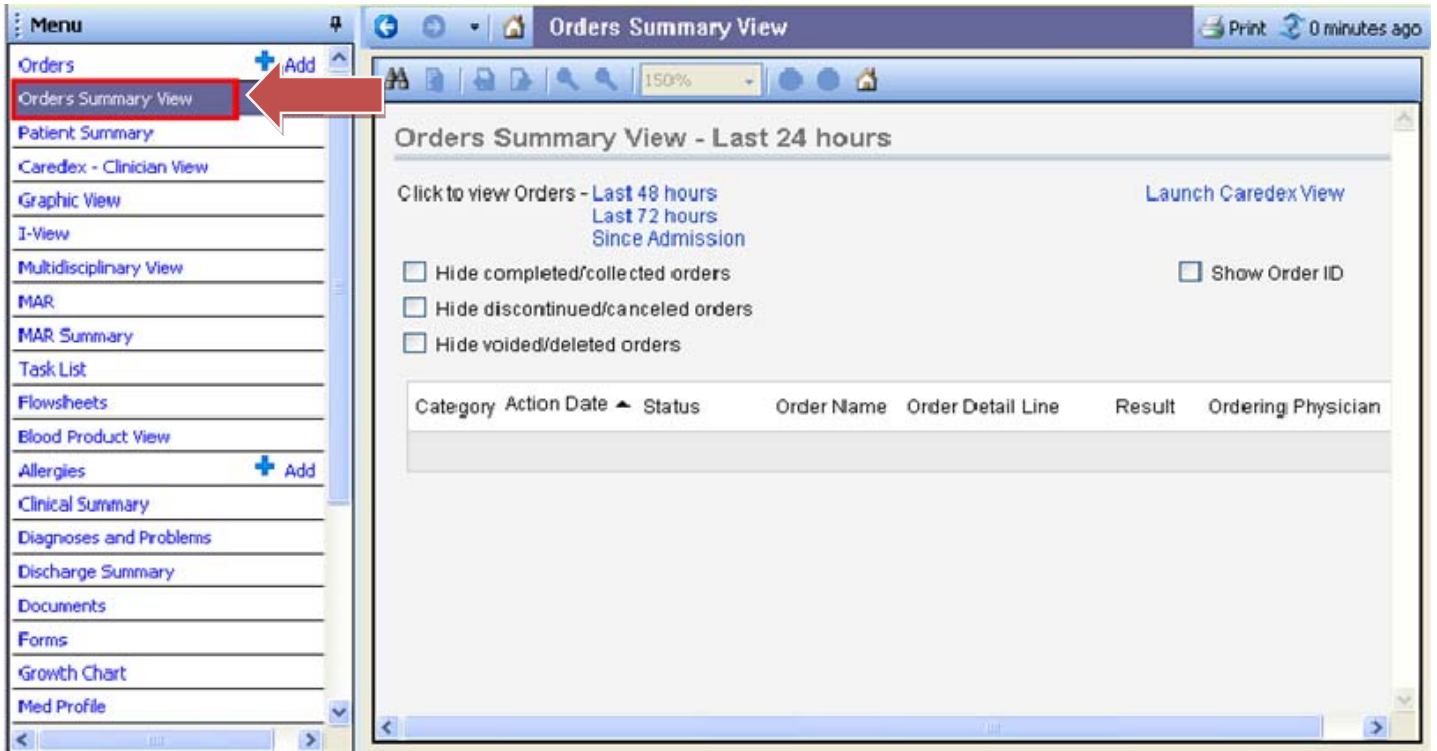
- Removal of an artificial airway will continue to display until discharge or until a new artificial airway is charted:

Respiratory	
Airway Type:	Artificial airway(s) removed - 08/11/11 09:42

## New Orders Summary View Tab for Allied Health Personnel

### Rationale

- This view was available to other medical practitioners and would be useful to Allied Health members.



The screenshot displays a web-based medical interface. On the left is a vertical menu titled 'Menu' with various options. The 'Orders Summary View' option is highlighted with a red box, and a red arrow points to it from the right. The main content area is titled 'Orders Summary View' and shows a sub-header 'Orders Summary View - Last 24 hours'. Below this, there are links for 'Click to view Orders - Last 48 hours', 'Last 72 hours', and 'Since Admission'. A 'Launch Caredex View' link is also present. There are three checkboxes for filtering orders: 'Hide completed/collected orders', 'Hide discontinued/canceled orders', and 'Hide voided/deleted orders'. A 'Show Order ID' checkbox is also visible. At the bottom, a table header is shown with columns: 'Category', 'Action Date', 'Status', 'Order Name', 'Order Detail Line', 'Result', and 'Ordering Physician'. The table body is currently empty.