

# COMPASS Update

## Physician Tips & Tricks COMPASS Improvements February 6, 2012

### Contents

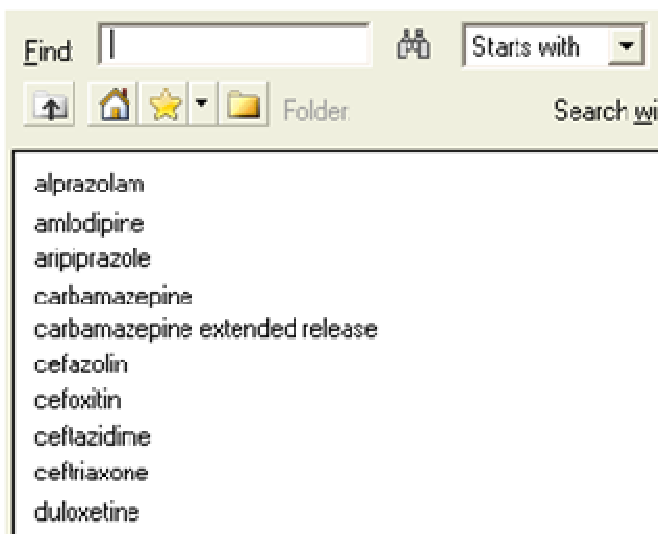
Information for All Practitioners .....	1
Information for Interventional Radiologists .....	2
Information for Pediatric Oncologists.....	2
Information for Emergency Physicians .....	3

### Information for All Practitioners

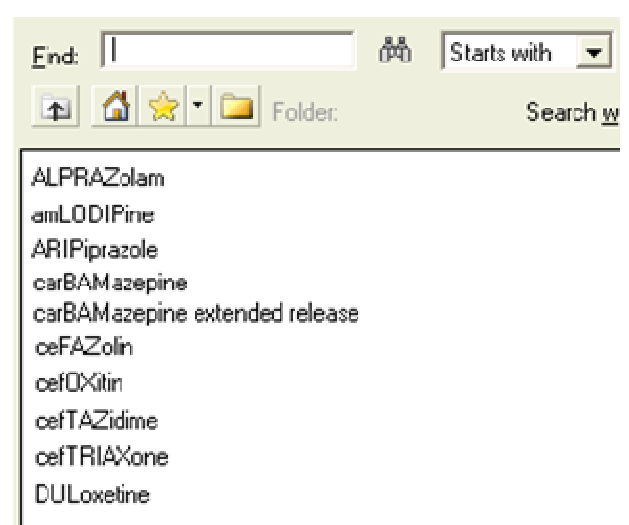
#### Tall Man Format for Additional Look Alike/Sound Alike Med Orders in February

Throughout the month of February, look alike/sound alike medication orders will change to Tall Man formatting as recommended by the Institute for Safe Medical Practices. See commonly ordered examples below.

#### Current



#### New



## Information for All Practitioners

Beginning February 14, nursing staff can document **multiple** ICPs and the type/location of the device will be visible in Graphics view

### Current

<b>Resp</b>					
<b>Neuro</b>	ICP - mmHG		11		
	CPP		L 13		
	ICP - cmH2O		10		
<b>Intake</b>					

### New

<b>Resp</b>					
<b>Neuro</b>	Drain Ventricular Left : ICP - mmHg		11		
	Drain Ventricular Left : CPP		L 10		
	Fiberoptic Parenchymal Right : ICP - cmH2O		12		
<b>Intake</b>					

## Information for Interventional Radiologists

The route of administration for IR Alteplase has changed from IV infusion to As directed with a special instruction “via perfusion catheter”

## Information for Pediatric Oncologists at DCMC, SMCH, and SMCW

Beginning February 14, nursing staff will document Mucositis Assessment in IView and that assessment will appear on the Flowsheet

### Flowsheet View

<input type="checkbox"/> Oxygen Flow Rate	10
<b>Mucositis Assessment</b>	
<b>Mucositis Grading Scale</b>	Mod pain; not inte
<input type="checkbox"/> Mucositis Grade	2

## Information for Emergency Physicians

### Toolbar Improvements on 2/13 (SEBD, SHL, SMCH), 2/14 (DCMC) and 2/15 (UMCB)

#### Rationale

- Enhances the ability of accessing frequently used forms and sections within COMPASS

#### Summary of Changes:

- A new row allows for Quick Access to frequently used sections in PowerChart. Left click to open the corresponding section
  - ADD Order
  - Orders
  - Medication List
  - Documents (a read only section)
  - Forms
  - Flowsheets
  - Diagnosis and Problems
  - ED Triage View

#### Current



#### New

