

# COMPASS Update

## ATTN: DCMC PHYSICIANS

### COMPASS Improvements Made During Feb 2009

POC Tests .....	Page 1
Changes to Existing Orders .....	Page 2-3
Viewing Documentation .....	Page 4
Meds Administration .....	Page 5

### Information for All Physicians

#### POC Tests

- Per physician requests, four POC tests listed below were added to the Micro tab. Please note that due to the data source for this information, these POC test results post **at the top** of the Micro tab and cannot be mixed with the microbiology results listed below.

*Rapid Group A Strep Antigen POC*

*Rapid Influenza Antigen A POC*

*Rapid Influenza Antigen B POC*

*RSV Antigen POC*

Micro
<p><b>POC TEST RESULTS:</b></p> <p>Performed Date: 02/16/2009 11:57 <b>RSV Antigen POC</b>                      RESULT: <b>Negative</b></p> <p>Performed Date: 02/16/2009 11:56 <b>Rapid Influenza Antigen A POC</b>                      RESULT: <b>Positive Influenza A</b></p> <p>Performed Date: 02/16/2009 11:56 <b>Rapid Influenza Antigen B POC</b>                      RESULT: <b>Positive Influenza B</b></p> <p>Performed Date: 02/16/2009 11:55 <b>Rapid Group A Strep Antigen POC</b>                      RESULT: <b>Negative</b></p>
<p><b>MICRO RESULTS:</b></p> <p>Last Update: 02/09/09 17:46 <b>CULT SMEAR ROUTINE</b>                      Collected: 02/09/09 17:00 Accession Num: M6555 Report Status: <b>Final</b>                      Specimen: Abscess ; <b>SPECIMEN DESCRIPTION: ABSCESS</b>  <b>SPECIAL REQUESTS: ABDOMINAL Swab</b>  <b>SMEAR RESULT: FEW WBCs SEEN</b>  <b>NO ORGANISMS OBSERVED</b></p>

## Information for All Physicians

### New Order

- A new *Speech Therapy Eval/Tx (Language)* order is available.

### Changes to Existing Orders

- To reduce confusion when ordering baclofen pumps, all previous baclofen pump orders were removed and replaced with one order: *Baclofen intraTHECAL implanted pump*.

The order contains a "Pump interrogation in process" order sentence and a "Pump must be interrogated within 8 hours - RN must call 3Central Team Leader for pump interrogation" order comment. Once determined, nursing should communicate with pharmacy to enter the appropriate baclofen order.

baclofen (Baclofen intraTHECAL implanted ...	Order	02/04/2009 14:46 CST	Pump interrogation in process IntraTHECAL qDay Pump must be interrogated within 8 hours - RN must call 3Central Team Leader for pump interrogation
---	-------	-------------------------	---

- To reduce the frequency of duplicate alerts for diet orders, duplicate checking status has been changed for:
  - Pediatric Diet
  - Pediatric Tube Feeding Formula 1-13 yrs
  - Infant Formula Custom Concentration
  - Infant Formula Ready to Feed
  - Pediatric Enteral Rehydration
  - Pediatric Tube Feeding Formula 14+ yrs
  - Adult Diet
- The micro-lab order entry fields were updated within 40 pedi PowerPlans. Example: The throat culture order will have 'Throat' pre-selected as the body site and 'Swab' pre-selected as the container site. The three most-commonly placed orders affected by this clean-up are *Blood Culture*, *Urine Culture* and *C Diff Toxin*.
- Re-named orders:
  - A new *Mumps Virus Antibodies IgG IgM* lab order has replaced the existing Mumps Antibody order
  - A new *Mumps IgG IgM* lab order has replaced the existing Mumps IgG order.
  - The Stone Risk Urine order has been re-named *Stone Risk Panel Urine*.
- When placing Speech Therapy orders and CareSets, clinicians can now search for the orders by typing "ST" or "Speech" in the *Add Orders* window.
- At the request of DCMC clinicians, the following changes were made to all pediatric PowerPlans in COMPASS between February 4 – 11:
  - All blood pressure qDay orders changed to reflect *Blood Pressure: qDay – If BP not required with each vital sign*.
  - All isolation orders will be default checked as "standard" isolation.
  - All isolation orders will include the correct **Empiric Isolation Precautions for Clinical Syndromes/Conditions** data at [http://intranet/polandproc/infectcontrol/docs/dcmc\\_isolation\\_precautions\\_table.doc](http://intranet/polandproc/infectcontrol/docs/dcmc_isolation_precautions_table.doc)
  - Physician Team Assignment orders removed.
  - Child life consult orders removed.
  - Height/length: qDay order removed.
  - Head circumference qDay order and note removed.

## Information for All Physicians

### Changes to Existing Orders

- The following plans recently underwent their two year review. Revisions were made to improve clarity, consistency, and standardization.

Previous Name	New Name	Change Highlights
UTI Pedi Adm	UTI Admit Pedi	<ul style="list-style-type: none"> <li>Removal of infrequently used orders</li> <li>Changed blood culture collection method to peripheral stick</li> </ul>
Meningitis Pedi	Meningitis Admit Pedi	<ul style="list-style-type: none"> <li>Removal of infrequently used orders</li> <li>Removed notify provider as default for urine output less than 2 mL/kg/hr</li> </ul>
Chest Tube Management Protocol Pedi	(same)	<ul style="list-style-type: none"> <li>Chest tube care: change default to 20cm H2O</li> <li>Remove default check from cefazolin.</li> <li>XR chest 1 view changed from STAT to Routine qAM: special instructions, until chest tube removed.</li> </ul>
Major Abd Surg Pedi Adm to Med/Surg or PICU	Major Abd Surg Admit Med/ Surg or PICU Pedi	<ul style="list-style-type: none"> <li>Removal of infrequently used orders</li> <li>Dressing change nursing special instruction to include as needed "to abdominal wound"</li> </ul>
Major Thoracic Surgery Admit Pedi Med/Surg or PICU	Major Thoracic Surgery Admit Med/Surg or PICU Pedi	<ul style="list-style-type: none"> <li>Removal of infrequently used orders</li> <li>Added default check to Chest X-Ray for PACU phase</li> </ul>
Plastic Surgery Discharge Orders	(same)	<ul style="list-style-type: none"> <li>For Discharge Diet, change default to Age Appropriate Diet</li> </ul>
Cleft Jaw Discharge Orders Pedi	Cleft Lip/Palate/Mandible Fracture Discharge Orders Pedi	<ul style="list-style-type: none"> <li>Discharge Activity is no longer default checked</li> <li>Physician phone number removed from plan</li> </ul>
General Plastic Surgery Hand Surgery PostOp Admission to Med/Surg or PICU Pedi	Plastic Surgery PostOp Admit to Med/Surg or PICU Pedi	<ul style="list-style-type: none"> <li>Many new medication options</li> <li>Inclusion of PACU Only Orders phase</li> </ul>
Cleft Lip/Cleft Palate Repair PostOp Adm to Med/Surg Pedi	Cleft Lip/Palate Repair PostOp Admit to Med/Surg Pedi	<ul style="list-style-type: none"> <li>Wider variety of available medications</li> <li>Removal of infrequently used orders</li> </ul>
Skin Pressure Ulcer Prevention Pedi	(same)	<ul style="list-style-type: none"> <li>A significantly more concise and streamlined plan</li> <li>A new <i>Use Lotion for Dry Skin.</i> order included</li> </ul>
Seizure Admit Pedi	(same)	<ul style="list-style-type: none"> <li>Parentheses placed around initial dose and maintenance dose of meds.</li> <li>The <i>CT Head or Brain w/ + w/o Contrast</i> order and all associated sentences were removed from the plan.</li> </ul>
IVIg Protocol Pedi	(same)	<ul style="list-style-type: none"> <li>Removed immune globulin 5% intravenous solution</li> <li>Added note "In the event"</li> <li>Removed communication order IVIG 5% Infusion Guidelines</li> </ul>
CAP Peds Over 28 days of Age Admit Pedi	Pneumonia CAP Peds Over 28 Days of Age Admit Pedi	<ul style="list-style-type: none"> <li>IV orders revised</li> <li>Removed all non categorized notes, added evidence-based link to Cincinnati Children's.</li> <li>Changed Pulse Ox special instruction.</li> <li>Removed duplicate orders</li> </ul>
General Admit Pediatric Med/ Surg	Admit Pedi Med/Surg	<ul style="list-style-type: none"> <li>Diet order changes</li> <li>D5 IV revisions</li> <li>Removed reason for X-ray Chest &amp; X-ray Abdomen Flat exams</li> </ul>

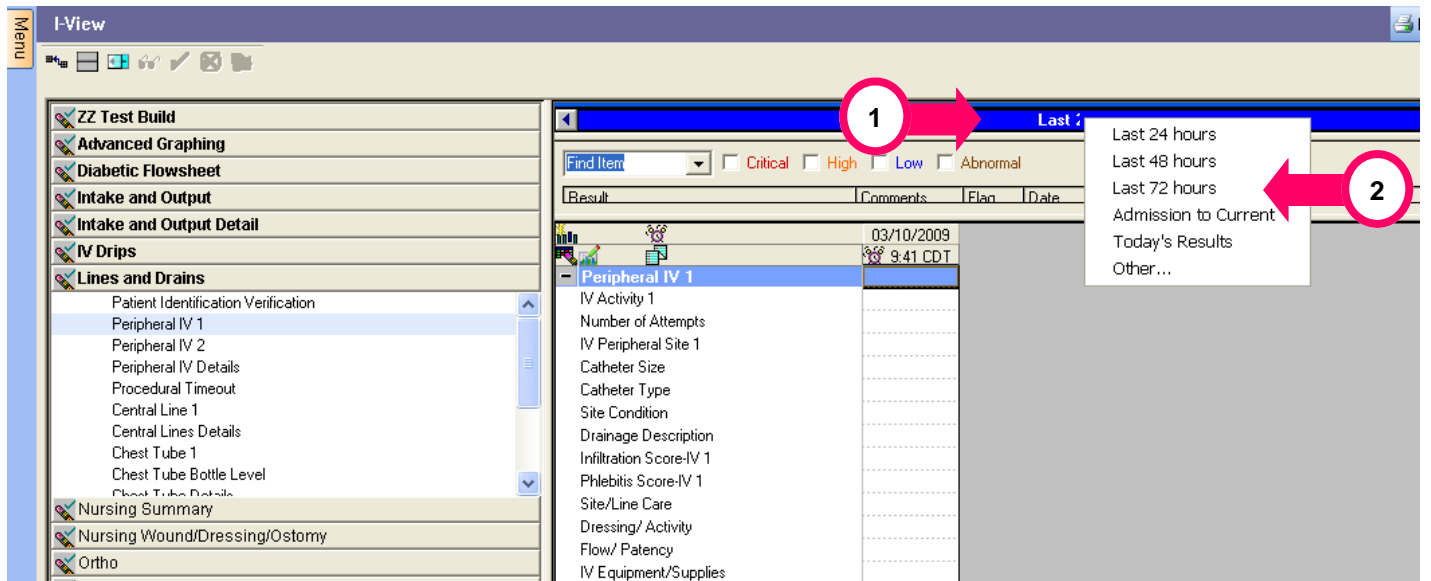
## Information for All Physicians

### Documentation

- To speed the load of data on the IView screen, the default clinical range has been changed to show the last 12 hours. Previously, the last 72 hours of data would appear.

Clinicians who would like to see data for a longer period of time may change their personal default settings by following the steps below:

1. With the IView screen active, right-click on the blue Clinical Range bar.
2. Select your desired default time frame.
3. The screen will refresh to show the new time frame.
4. Please note: The first time you change a default setting, you must exit COMPASS via the Exit Door icon on the toolbar to permanently save the new setting. Clicking on the Red X or disconnecting in any other manner will not save your change.



# Information for All Physicians

## Meds Administration

- Please be aware the TMRR now includes a 'Last Dose Given' column as requested by Dell Children's Medical Center. DCMC associates need to hand write in the time of last dose given.

### Medication Reconciliation on Transfer

ED, ANTHONY                      Age: 28 Years    DOB: 07/11/1980    Sex: M  
 Ht:                                      Wt:  
 Rn: W3MS-04 04                      MRN: 8252051    Fin Nbr: 8070027489  
 Attending Physician:  
 Allergies/ADRs:

Medication Summary View	
Home	In Hospital Medications
<p><b>Scheduled Medications</b></p> <p>aspirin 1 tab PO (oral) once a day                      metformin 1 tab(s) PO (oral) 2 times a day</p>	<p><b>Scheduled Medications</b></p> <p>lisinopril 10 mg=1 tab(s) PO (oral) once a day                      aspirin 81 mg=1 tab(s) PO (oral) once a day                      sucralfate 500 mg=5 mL G Tube 4 times a day (before meals and at bedtime)</p> <p><b>Unscheduled Medications</b></p> <p>tetanus toxoid 0.1 mL IM As directed (instructions follow)</p> <p><b>PRN Medications</b></p> <p>labetalol 10 mg=2 mL IV Push every hour as needed                      morphine 1 mg IV Push every hour as needed</p> <p><b>Continuous Medications</b></p> <p>D5 1/2 NS 1000 mL IV Infusion</p>

**Label reminds users only DCMC will use the Last Dose Given field**

\* Only DCMC units required to complete Last Dose Given Column  
 New medications can be written on the last page of this document

Date Ordered	Scheduled Medications	Action to be Taken	Last Dose Given*
Start 01/07/09 1116 order 175305740	<b>CARDIOVASCULAR AGENTS</b> lisinopril 10 mg=1 tab(s) (LISINAPRIL) PO (oral) once a day Modification:	<input type="checkbox"/> Continue <input type="checkbox"/> Discontinue <input type="checkbox"/> Modify	